

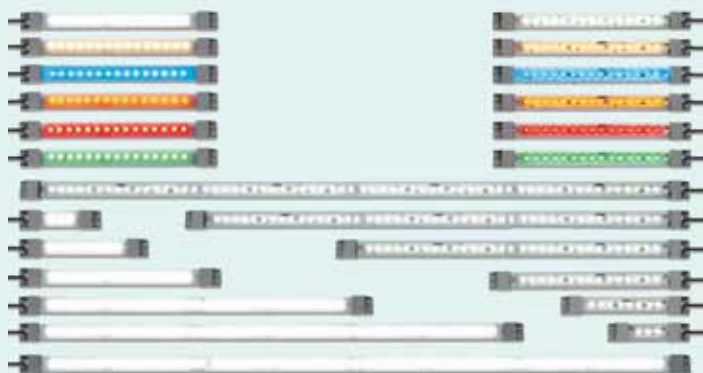
LUMIFA LF1B-N

Control Panels • Industrial Equipment • Signage

LF1B-N Series (IP65)

The LF1B-N series LED light strips are slim and perfect for applications where space is a concern. They come in six different lengths and six distinct colors, making them a very flexible lighting solution.

- Compact design: 27.5mm wide, 16mm high, and 134 to 1,080mm long
- Improved brightness
- 6 Colors: cool white, warm white, yellow, red, blue, green
- 2 Cover colors: clear, white
- IP65 degree of protection (waterproof, dustproof), suitable for use in wet locations



Specifications

Model		LF1B-NA (134mm)	LF1B-NB (210mm)	LF1B-NC (330mm)	LF1B-ND (580mm)	LF1B-NE (830mm)	LF1B-NF (1,080mm)
Rated Voltage		24V DC (operating voltage range: 21.6 to 26.4V)					
Input Current (typ.) (at the rated current)	cool white/warm white/blue	60mA	120mA	180mA	360mA	540mA	720mA
	red/yellow/green	40mA	80mA	120mA	240mA	360mA	480mA
Power Consumption (typ.) (at the rated voltage)	cool white/warm white/blue	1.5W	2.9W	4.4W	8.7W	13.0W	17.3W
	red/yellow/green	1.0W	2.0W	2.9W	5.8W	8.7W	11.6W
Insulation Resistance		100MΩ minimum (500V DC megger)					
Dielectric Strength		1,000V AC, 1 minute (between live and dead parts)					
Vibration Resistance (damage limits)		Frequency: 5 to 55 Hz, Amplitude 0.5mm Acceleration 60m/s ² (6G), 2 hours each in 3 axes				Frequency: 5 to 55 Hz, Amplitude 0.17mm Acceleration 20m/s ² (2G), 2 hours each in 3 axes	
Shock Resistance (damage limits)		1,000m/s ² (100G), 5 shocks each in 6 axes				300m/s ² (30G), 5 shocks each in 6 axes	
Operating Temperature		-30 to +55°C (no freezing)					
Operating Humidity		45 to 85% RH (no condensation)					
Storage Temperature		-35 to +70°C (no freezing)					
Operating Atmosphere		No corrosive gases					
Life (Note)		40,000 hours (Ta = 25°C) (The total illumination life in which the brightness maintains a minimum of 70% of the initial value.)					
Degree of Protection		IP65 (IEC 60529)					
Material		Cover: polycarbonate, End cover/cable gland: polyamide, Wire: PVC (24AWG)					
Weight (approx.)		95g	125g	165g	255g	430g	740g

Note: LED life depends on the operating environment.

LED Optical Specifications

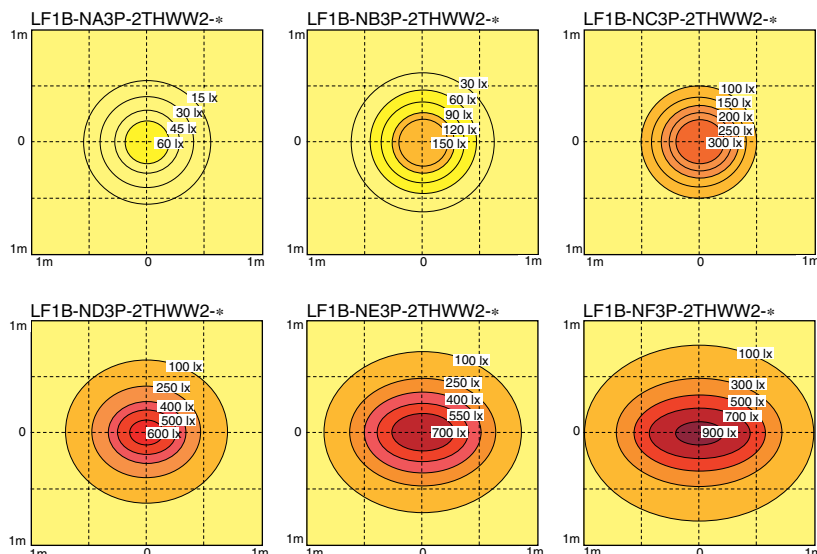
Illumination Color	Cool White		Warm White		Yellow		Red		Green		Blue		
	Clear	White	Clear	White	Clear	White	Clear	White	Clear	White	Clear	White	
Color Temperature/ Dominant Wavelength (typ.)	5,500K		2,900K		590nm		620nm		525nm		455nm		
Reference Brightness (typ.) at 0.5m	LF1B-NA	90lx	80lx	60lx	55lx	60lx	55lx	20lx	18lx	30lx	27lx	10lx	9lx
	LF1B-NB	220lx	200lx	145lx	130lx	145lx	130lx	40lx	36lx	60lx	55lx	20lx	18lx
	LF1B-NC	400lx	360lx	250lx	225lx	250lx	225lx	75lx	65lx	110lx	100lx	30lx	27lx
	LF1B-ND	660lx	600lx	455lx	410lx	455lx	410lx	125lx	110lx	190lx	170lx	50lx	45lx
	LF1B-NE	820lx	740lx	560lx	500lx	560lx	500lx	160lx	145lx	260lx	235lx	60lx	55lx
	LF1B-NF	935lx	850lx	620lx	555lx	620lx	555lx	180lx	160lx	300lx	270lx	80lx	70lx

LED modules and illumination units may vary in illumination colors and brightness.

Part Numbers

Illumination Color		Cool White	Warm White	Yellow	Red	Blue	Green
Appearance	Clear cover						
	White cover						
LF1B-NA (134mm)	Clear cover	LF1B-NA3P-2THWW2-3M	LF1B-NA3P-2TLWW2-3M	LF1B-NA3P-2SHY2-3M	LF1B-NA3P-2SHR2-3M	LF1B-NA3P-2THS2-3M	LF1B-NA3P-2SHG2-3M
	White cover	LF1B-NA4P-2THWW2-3M	LF1B-NA4P-2TLWW2-3M	LF1B-NA4P-2SHY2-3M	LF1B-NA4P-2SHR2-3M	LF1B-NA4P-2THS2-3M	LF1B-NA4P-2SHG2-3M
LF1B-NB (210mm)	Clear cover	LF1B-NB3P-2THWW2-3M	LF1B-NB3P-2TLWW2-3M	LF1B-NB3P-2SHY2-3M	LF1B-NB3P-2SHR2-3M	LF1B-NB3P-2THS2-3M	LF1B-NB3P-2SHG2-3M
	White cover	LF1B-NB4P-2THWW2-3M	LF1B-NB4P-2TLWW2-3M	LF1B-NB4P-2SHY2-3M	LF1B-NB4P-2SHR2-3M	LF1B-NB4P-2THS2-3M	LF1B-NB4P-2SHG2-3M
LF1B-NC (330mm)	Clear cover	LF1B-NC3P-2THWW2-3M	LF1B-NC3P-2TLWW2-3M	LF1B-NC3P-2SHY2-3M	LF1B-NC3P-2SHR2-3M	LF1B-NC3P-2THS2-3M	LF1B-NC3P-2SHG2-3M
	White cover	LF1B-NC4P-2THWW2-3M	LF1B-NC4P-2TLWW2-3M	LF1B-NC4P-2SHY2-3M	LF1B-NC4P-2SHR2-3M	LF1B-NC4P-2THS2-3M	LF1B-NC4P-2SHG2-3M
LF1B-ND (580mm)	Clear cover	LF1B-ND3P-2THWW2-3M	LF1B-ND3P-2TLWW2-3M	LF1B-ND3P-2SHY2-3M	LF1B-ND3P-2SHR2-3M	LF1B-ND3P-2THS2-3M	LF1B-ND3P-2SHG2-3M
	White cover	LF1B-ND4P-2THWW2-3M	LF1B-ND4P-2TLWW2-3M	LF1B-ND4P-2SHY2-3M	LF1B-ND4P-2SHR2-3M	LF1B-ND4P-2THS2-3M	LF1B-ND4P-2SHG2-3M
LF1B-NE (830mm)	Clear cover	LF1B-NE3P-2THWW2-3M	LF1B-NE3P-2TLWW2-3M	LF1B-NE3P-2SHY2-3M	LF1B-NE3P-2SHR2-3M	LF1B-NE3P-2THS2-3M	LF1B-NE3P-2SHG2-3M
	White cover	LF1B-NE4P-2THWW2-3M	LF1B-NE4P-2TLWW2-3M	LF1B-NE4P-2SHY2-3M	LF1B-NE4P-2SHR2-3M	LF1B-NE4P-2THS2-3M	LF1B-NE4P-2SHG2-3M
LF1B-NF (1,080mm)	Clear cover	LF1B-NF3P-2THWW2-3M	LF1B-NF3P-2TLWW2-3M	LF1B-NF3P-2SHY2-3M	LF1B-NF3P-2SHR2-3M	LF1B-NF3P-2THS2-3M	LF1B-NF3P-2SHG2-3M
	White cover	LF1B-NF4P-2THWW2-3M	LF1B-NF4P-2TLWW2-3M	LF1B-NF4P-2SHY2-3M	LF1B-NF4P-2SHR2-3M	LF1B-NF4P-2THS2-3M	LF1B-NF4P-2SHG2-3M
Applications		Industrial Machines Plant equip. Inspection/test equip. Control panels	Food processing machines Cosmetic plants Chemical plants Showcases	Semiconductor manufacturing equip. IC foundries	Photosensitive materials Semiconductor manufacturing equip. Darkroom experiments	Signage Decorative lighting	

Brilliance Distribution at 0.5m (reference value)



Part Number Structure

LF1B - NC 3 P - 2 THWW2 - 3M

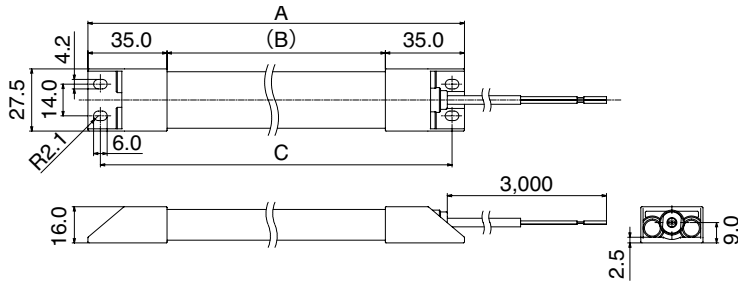
Length	Cover	Cable Length
A: 134mm (5.275")	3: Clear	3M: 3m
B: 210mm (8.267")	4: White	
C: 330mm (12.992")		
D: 580mm (22.834")		
E: 830mm (32.677")		
F: 1,080mm (42.519")		
	Illumination Color	
	THWW2: Cool white	
	TLWW2: Warm white	
	SHY2: Yellow	
	SHR2: Red	
	THS2: Blue	
	SHG2: Green	

Optional Mounting Bracket



Part No.	LF9Z-1MB1
Material	Stainless Steel
Note	1 pair, Left and Right

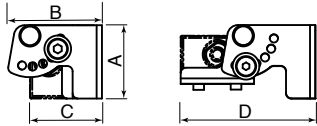
Dimensions (mm)



Dimension Table

Model	A		B		C	
	mm	inch	mm	inch	mm	inch
LF1B-NA	134	5.275	64	2.519	123	4.842
LF1B-NB	210	8.267	140	5.511	199	7.834
LF1B-NC	330	12.992	260	10.236	319	12.559
LF1B-ND	580	22.834	510	20.078	569	22.401
LF1B-NE	830	32.677	760	29.921	819	32.244
LF1B-NF	1080	42.519	1010	39.763	1069	42.086

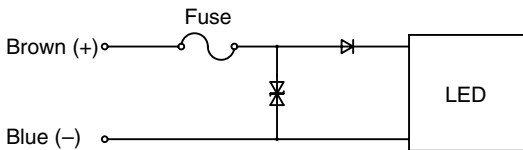
Mounting Bracket



Dimension Table

A		B		C		D	
mm	inch	mm	inch	mm	inch	mm	inch
27.5	1.082	35.2	1.385	27	1.062	50.5	1.988

Internal Circuit



! Safety Precautions

- To avoid electric shock, fire, or malfunction do not disassemble, repair, or modify the unit.
- Turn power off before wiring. To prevent electric shock or damage, ensure wiring is correct.
- Do not stare directly into the LF1B-N unit while it is lit, and do not project the light towards other people, as their eyes may be injured.
- The LF1B-N is a general-purpose industrial electric device. Do not use with electronic equipment which may cause harm or injury to anyone in case a malfunction or failure occurs.

Instructions

- LED modules may vary in color and brightness.
- Before designing equipment and powering up units, confirm the specifications described in the instruction sheet.
- Apply voltage within the rated values, otherwise the LED elements may be damaged.
- The unit is vulnerable to static electricity. Take sufficient measures for protection against static electricity and voltage surges.
- Make sure that the unit is not dropped during transportation, installation, and operation, otherwise damage may result.
- Do not pull or push the cable, otherwise damage may result. Allow sufficient slack to the cable while wiring.
- Do not apply excessive force. Do not leave a damaged unit unattended or use a damaged unit.
- Ensure the correct operating temperature, as rise in internal temperature may result in damage to the unit.
- Do not use or store in a location subject to vibration and shock.
- Do not use in the following locations:
 - Exposure to direct sunlight, near heaters, high temperatures
 - Subject to chemicals, and corrosive gases
 - Cold storage warehouses (make sure that no freezing occurs)
- Do not loosen screws, otherwise, the protection characteristics will be impaired.
- To clean the cover use a soft cloth with water or neutral detergent. Do not use solvents such as thinners, benzene, or alkaline, otherwise discoloration, deterioration, or decrease in strength may occur.
- The edge of the cable sheath is not waterproof. Moisture may be drawn in to the unit if water splashes directly onto the cable sheath.



Think Automation and beyond...

800.262.4332

www.IDEC.com/usa/LED

www.IDEC.com

USA

IDEC Corporation
Tel: (408) 747-0550
opencontact@IDEC.com

Canada

IDEC Canada Ltd.
Tel: (905) 890-8561
sales@ca.IDEC.com

Australia

IDEC Australia Pty. Ltd.
Tel: +61-3-8523-5900
sales@au.IDEC.com

Japan

IDEC Corporation
Tel: +81-6-6398-2571
products@IDEC.co.jp

United Kingdom

IDEC Electronics Ltd.
Tel: +44-1256-321000
IDEC@uk.IDEC.com

Germany

IDEC Elektrotechnik GmbH
Tel: +49-40-253054-0
service@IDEC.de

Hong Kong

IDEC (H.K.) Co., Ltd.
Tel: +852-2803-8989
info@hk.IDEC.com

China/Beijing

IDEC (Beijing) Corporation
Tel: +86-10-6581-6131
idec@cn.IDEC.com

China/Shanghai

IDEC (Shanghai) Corporation
Tel: +86-21-5353-1000
idec@cn.IDEC.com

China/Shenzhen

IDEC (Shenzhen) Corporation
Tel: +86-755-8356-2977

Singapore

IDEC Asia Pte. Ltd.
Tel: +65-6746-1155
info@sg.IDEC.com

Taiwan

IDEC Taiwan Corporation
Tel: +886-2-2698-3929
service@tw.IDEC.com

©2011 IDEC Corporation. All Rights Reserved. LF9Y-B200-0 11/11 7.5K

Specifications and other descriptions in this catalog are subject to change without notice.